



Operating Manual iProgrammer Streetlight Software

**Programming
Streetlight Drivers using
iProgrammer Streetlight**

Ref. No.: 186780

iPROGRAMMER STREETLIGHT SOFTWARE

CONTENTS

■ GENERAL INFORMATION	2
■ OVERVIEW OF SYSTEM SETUP	3
■ TECHNICAL DETAILS AND NOTES	4
■ INTRODUCTION	5
■ SOFTWARE OPERATION IN DETAIL	6



■ GENERAL INFORMATION

The "iProgrammer Streetlight Software" with its matching "iProgrammer Streetlight" programming device enables simple and quick configuration of operating parameters as well as data transfer (programming) to the driver, for which purpose the driver must be disconnected from any voltage supply.

The configuration of operating parameters such as output current (mA), CLO or dimming levels is effected using Vossloh-Schwabe's "iProgrammer Streetlight Software". The iProgrammer Streetlight device is connected to the driver via a USB drive and a PC with two data lines.

The configuration of the software as well as programming itself can be carried out only after disconnection from mains voltage. The ability to save several configuration profiles makes the system highly flexible, which in turn lets manufacturers quickly respond to customer requirements.



Up to four operating parameters can be individually set and saved.

1 Output:

Individual control of output current (Output) in mA.

2 Dimming Function (0–10V or 5-step dimming):

The driver can be operated with two different dimming settings: either with a 0–10 V interface or with a 5-step timer.

3 Module Thermal Protection (NTC):

The NTC interface provides thermal protection for the LED modules by triggering a reduction in current when critical temperatures are attained. Alternatively, temperature reduction can be configured using an external NTC resistor connected to the driver.

4 Constant Lumen Output (CLO):

The lumen output of an LED module decreases gradually over the course of its service life. To guarantee a constant lumen output, the output of the control gear must be gradually increased over the course of the module's service life.

■ TECHNICAL DETAILS AND NOTES

1. iProgrammer Streetlight

iProgrammer Streetlight	186780
Dimensions (LxWxH)	165 x 43 x 30 mm
Temperature range	0 to 40 °C (max. 90% r.h.)
Function	Sending and receiving settings

2. Safety Information

- Please check the device for damage prior to using it. The device must not be used if the casing is damaged. The device must then be disposed of in an appropriate manner.
- The USB port is solely designed to operate the iProgrammer Streetlight device (USB 1/USB 2). Inserting non-USB cables or conductive objects is not permitted and can damage the device. Never use the device in environments that are humid or pose a risk of explosion.
- Never use the device for any purpose other than the one for which it was designed, namely to configure VS control gear.
- The device must be disconnected from mains voltage during programming.

■ OVERVIEW OF SYSTEM SETUP



Computer with USB interface and programming software to set operating parameters for VS drivers



iProgrammer Streetlight programming device 186780



VS streetlight driver

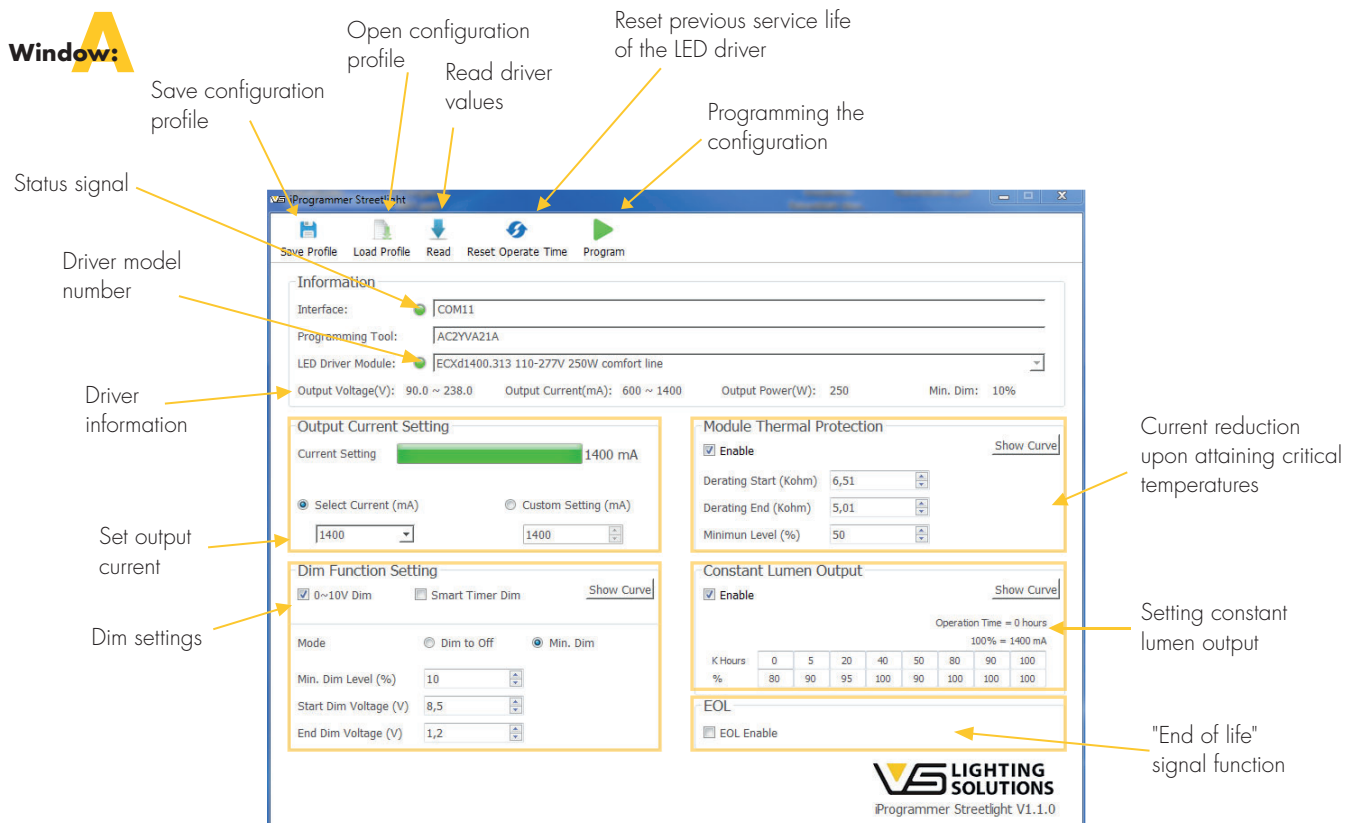
■ INTRODUCTION

1. Download the Software

The iProgrammer Streetlight Software can be downloaded via the following link: www.vossloh-schwabe.com

2. Short Overview

The following image (Window A) provides an overview of the software's working window.



■ SOFTWARE OPERATION IN DETAIL

The following serves to describe software operation and configuration in three steps.

1. Step Carry out system setup

Once the software has been successfully downloaded and installed, system setup needs to be carried out (see page 3). In addition to the software, the iProgrammer Streetlight programming device and the VS Streetlight driver are further prerequisites.

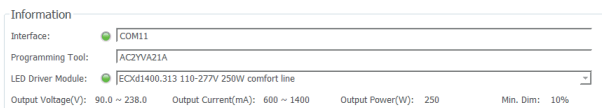
First of all, insert the iProgrammer Streetlight programming device into a free USB port on your computer, then connect the iProgrammer Streetlight with the matching Streetlight driver. The safety instructions (see p. 3) must be observed when using the devices. As soon as these preparatory steps have been taken, the software can be started.

There are two ways to get started:

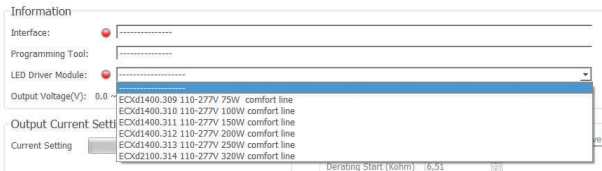
1. First use:
Start with new settings
2. Repeated use:
Start by opening already saved settings/files
("Load Profile"/"Read")

Driver selection

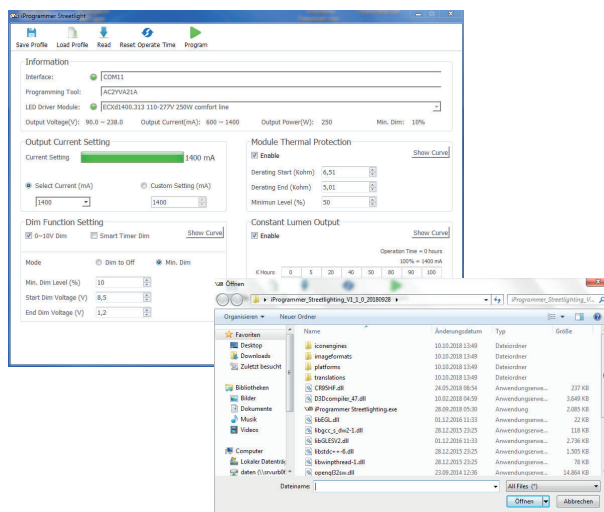
To begin with, the driver you wish to program must be recognised by the software. As soon as the device has been found the associated reference number will be shown and a green signal colour will appear.



If no driver is found, the signal colour will be red. Please check whether the driver has been properly connected and whether you are using a matching driver. Matching drivers are shown in the list.



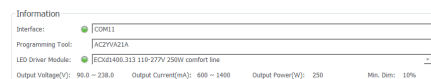
Configurations that have already been worked on can be loaded manually.



2. Step Configuring the 4 parameters

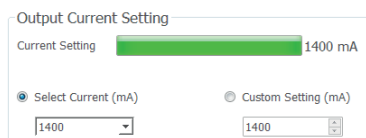
Once the software has been successfully paired with the iProgrammer Streetlight, configuration can be carried out.

The driver's parameters can be found in the "Information" field. The configuration of the parameters is carried out in the respective working field.



Output current settings

You can choose between two settings for the output current (mA) of the driver, for which purpose the limits (mA) of the chosen driver are specified. The setting can be made either via direct entry or by clicking on the arrows. Activating the "Select Current (mA)" control box will let you set the output current in 50 mA steps, while activating the "Custom Setting (mA)" will let you set output current in 1 mA steps.



2 Dimming function (0-10 V Step-Dim Timer)

The driver can be operated with two different dimmer settings. Clicking on the control box of the "0-10 V Dim Function" will activate two further setting options, either "Dim To Off" or "Min. Dim". With "Dim To Off", a lower limit is specified (min. 10%); if the value drops below this lower limit, the driver will switch to standby mode. If "Min. Dim" is activated, the output current remains at the specified minimum dimmer setting, even if the values fall below the minimum dimming voltage, i.e. lighting will be dimmed, but not switched off. The start and end values of the dimming voltage can be set separately.

Dim Function Setting

☒ 0-10V Dim ☐ Smart Timer Dim [Show Curve](#)

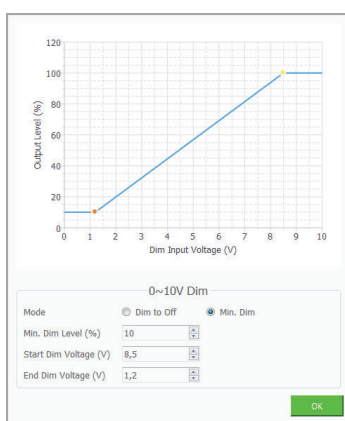
Mode: ☐ Dim to Off ☒ Min. Dim

Min. Dim Level (%)

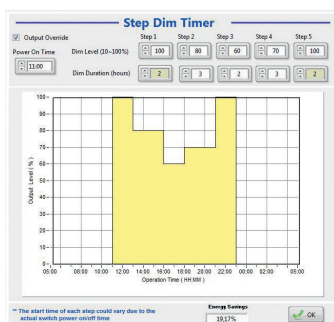
Start Dim Voltage (V)

End Dim Voltage (V)

In addition, both configurations can be viewed and adjusted in a diagram by clicking on the "Show Curve" button.



Furthermore, the diagram of the "Step-Dim Timer" lets you set 5 dimming levels via a timer. Instead of the "0-10 V" dimming function, a multistep timer can also be used. To that end, please select the "Step-Dim Timer" function and then open the setting options by clicking on "Show Curve". Fiving dimming steps can be set, with possible steps ranging between 1 and 4 hours. The dimming level can be set in 5% steps between 10 and 100%. Activating the "Output Override" function will briefly return lighting levels to 100% should a motion sensor also be connected. The "Power On Time" setting lets you move the diagram for improved viewing.



Parameter settings

Min. dimming level:
10...50%

Start dimming voltage:
5...8.5 V

Stop dimming voltage:
1.2...2 V

Note

The times shown do not refer to actual times of day, but are used for illustrative purposes only.

3 Thermal protection function for LED modules (NTC)

LED modules can be protected against overheating by connecting an NTC to the driver, to which end the function must be activated and the appropriate resistance range must be specified. The lowest dimming level can be set in percent.

Module Thermal Protection

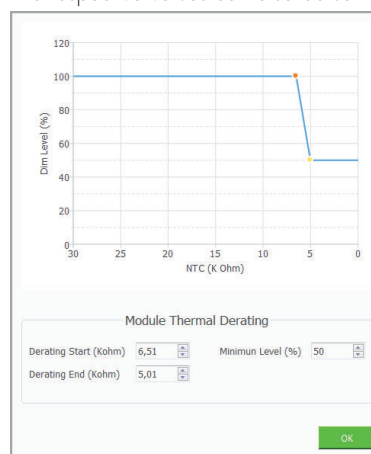
☒ Enable [Show Curve](#)

Derating Start (Kohm)

Derating End (Kohm)

Minimum Level (%)

The respective values can also be set in the diagram.



4 Constant Lumen Output (CLO)

This function is deactivated by default. To ensure constant lumen output, the output of the control gear can be gradually increased over the course of the service life. Clicking on the control box will let you set up to 8 light levels (%) over 100,000 hours.

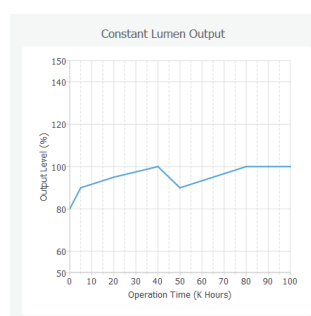
Constant Lumen Output

☒ Enable [Show Curve](#)

Operation Time = 0 hours
100% = 1400 mA

K Hours	0	5	20	40	50	80	90	100
%	80	90	95	100	90	100	100	100

The diagram illustrates this.



5 Activating End-of-Life Function

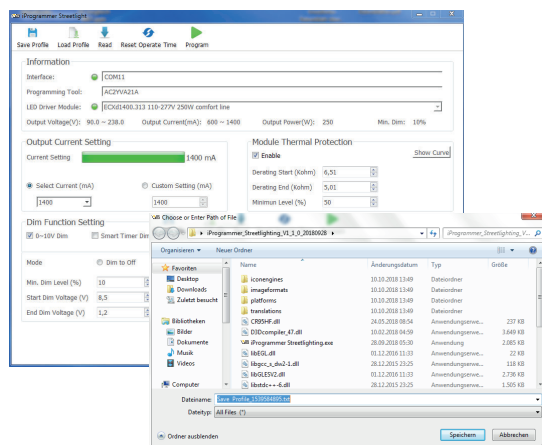
The end-of-life function is deactivated by default. If activated, the light on the device will flash 3 times if the maximum service life of 50,000 hours has been reached when the device is switched on.

EOL
☒ EOL Enable

3. Step Saving and Data Transfer

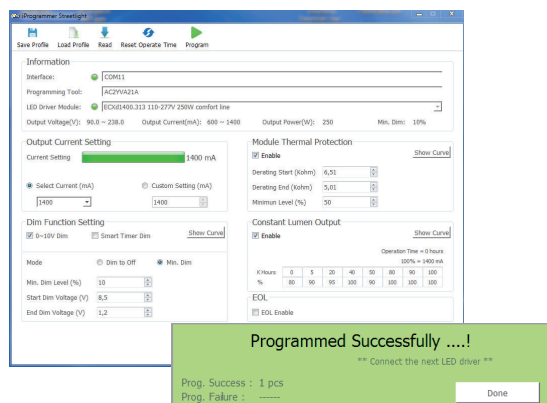
Saving

Once you have completed configuration successfully, the configuration profile can be saved at a location of your choice under "Save Profile".



Programming

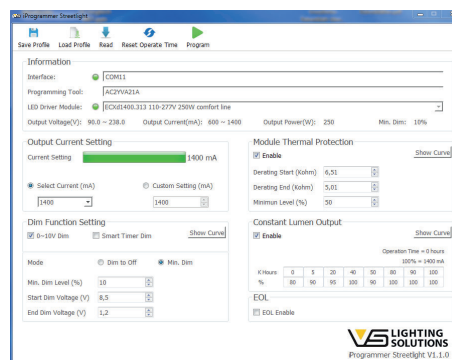
Once configuration has been completed, the parameter values can be transferred to the respective driver. To program the parameter values, click on "Program", whereupon all activated parameters will be transferred and a confirmation will appear.



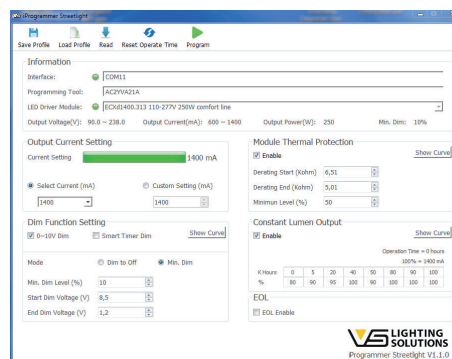
To program a further driver with the same settings, simply disconnect the programmed driver and connect the one. Programming will then begin automatically without requiring another keystroke.

Read

The "Read Function" lets you read the driver configuration. The values will appear in the respective working field once "Read" is clicked.



Note: Clicking on the "Reset Operate Time" will reset the previous operating time of the device.



Whenever an electric light goes on around the world, Vossloh-Schwabe is likely to have made a key contribution to ensuring that everything works at the flick of a switch.

Headquartered in Germany, Vossloh-Schwabe has been a member of the global Panasonic group since 2002 and counts as a technology leader within the lighting sector. Top-quality, high-performance products form the basis of the company's success.

Vossloh-Schwabe's extensive product portfolio covers all lighting components: LED systems with matching control gear units, highly efficient optical systems, state-of-the-art control systems (LiCS) as well as electronic and magnetic ballasts and lampholders.

The company's future is Smart Lighting.

Vossloh-Schwabe Deutschland GmbH

Hohe Steinert 8 · 58509 Lüdenscheid · Germany
Phone +49/23 51/10 10 · Fax +49/23 51/10 12 17

www.vossloh-schwabe.com



All rights reserved © Vossloh-Schwabe
Photos: Vossloh-Schwabe
Technical changes are subject to change without notice
iProgrammer Streetlight Software EN 10/2018