

LED MODULES READYLINE COB

BUILT-IN MODULE
57 MM – 230 V



LED MODULES READYLINE COB

EDC_57C_xxW_xxx_230A_VS4

Typical Applications

- Residential lighting
- Replacement for CFL downlights
- Integration in reflector luminaires
- Furniture lighting



LED Modules ReadyLine COB

- **DIRECT MAINS CONNECTION**
- **DIMMABLE**
- **HIGH POWER FACTOR**
- **LONG SERVICE LIFETIME: 50,000 HOURS**
- **DEKRA APPROVED**



LED Modules ReadyLine COB

Technical Notes

- LED built-in module for integration into luminaires
- Mains voltage: 230 V AC
- Power factor: > 0.95
- THD: < 20 %
- Dimensions (ØxH): Ø 57 x 4.7 mm
- On-Board push-in connector
- Light emitting surface (LES)
 - Ø 14 mm: 10 W, 15 W, 20 W
 - Ø 21 mm: 30 W, 40 W



Electrical Characteristics

at $t_c = 55\text{ °C}$

Type	Typ. supply voltage AC V ± 10%	Operation frequency Hz	Typ. power consumption at 230 V W	Power factor	Total harmonic distortion (THD) %	Flicker percent %	Flicker index
EDC_57C_10W_XXX_230A_VS4	220-240	50/60	10	0.95	< 20	100	0.33
EDC_57C_15W_XXX_230A_VS4	220-240	50/60	15	0.95	< 20	100	0.33
EDC_57C_20W_XXX_230A_VS4	220-240	50/60	20	0.95	< 20	100	0.33
EDC_57C_30W_XXX_230A_VS4	220-240	50/60	30	0.95	< 20	100	0.33
EDC_57C_40W_XXX_230A_VS4	220-240	50/60	40	0.95	< 20	100	0.33

Maximum Ratings

Exceeding the maximum ratings can lead to reduction of service life or destruction of the modules.

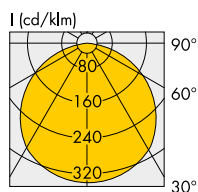
Type	Operation voltage range AC (V)		Operation temperature range at t_c point		Ambient temperature range		Storage temperature range	
	min.	max.	°C min.	°C max.	°C min.	°C max.	°C min.	°C max.
EDC_57C_XXW_XXX_230A_VS4	198	264	-30	+85	-30	+60	-30	+85
EDC_57C_40W_XXX_230A_VS4	198	264	-30	+85	-30	+55	-30	+85

Operating Life

50,000 h (L70/B50)

at $t_c = 55\text{ °C}$

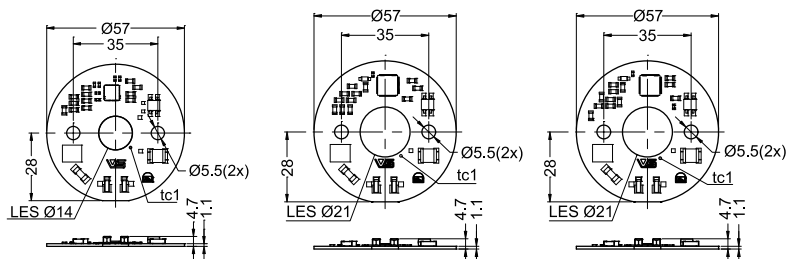
Typical Light Distribution Curve



Production Code

Type	Shape	Power	CRI	Mains voltage	Version
EDC_XX X_XXW_X XX_XXX X_VSX					
38 C	4W	8	27	120 A	1
57 S	6W	9	30	230 D	2
	8W		35		3
	10W		40		4
	15W		50		5
	20W				6
	30W				
	40W				

Mechanical Dimensions



10 W, 15 W, 20 W

30 W

40 W

The values contained in this data sheet can change due to technical innovations. Any such changes will be made without separate notification.

LED Modules ReadyLine COB

Optical Characteristics

at $t_c = 55\text{ °C}$, at 230 V AC

Typ. output W	Type	Ref. No.	Colour	Correlated colour temperature* K	Luminous flux (lm) and typ. efficiency (lm/W)**			Typ. beam angle °	Typ. CRI R _a	Energy efficiency
					min. lm	typ. lm	typ. lm/W			
10	EDC57C_10W827_230A_VS4	559771	warm white	2700	800	900	90	120	80	A+
	EDC57C_10W830_230A_VS4	559772	warm white	3000	850	950	95	120	80	A+
	EDC57C_10W835_230A_VS4	559773	warm white	3500	870	970	97	120	80	A+
	EDC57C_10W840_230A_VS4	559774	neutral white	4000	900	1000	100	120	80	A+
	EDC57C_10W850_230A_VS4	559775	cool white	5000	950	1050	105	120	80	A+
15	EDC57C_15W827_230A_VS4	559776	warm white	2700	1200	1350	90	120	80	A+
	EDC57C_15W830_230A_VS4	559777	warm white	3000	1275	1425	95	120	80	A+
	EDC57C_15W835_230A_VS4	559778	warm white	3500	1290	1440	96	120	80	A+
	EDC57C_15W840_230A_VS4	559779	neutral white	4000	1320	1470	98	120	80	A+
	EDC57C_15W850_230A_VS4	559780	cool white	5000	1350	1470	100	120	80	A+
20	EDC57C_20W827_230A_VS4	559781	warm white	2700	1600	1800	90	120	80	A+
	EDC57C_20W830_230A_VS4	559782	warm white	3000	1700	1900	95	120	80	A+
	EDC57C_20W835_230A_VS4	559783	warm white	3500	1720	1920	96	120	80	A+
	EDC57C_20W840_230A_VS4	559784	neutral white	4000	1760	1960	98	120	80	A+
	EDC57C_20W850_230A_VS4	559785	cool white	5000	1800	2000	100	120	80	A+
30	EDC57C_30W827_230A_VS4	560985	warm white	2700	2400	2700	90	120	80	A+
	EDC57C_30W830_230A_VS4	560986	warm white	3000	2550	2850	95	120	80	A+
	EDC57C_30W835_230A_VS4	560987	warm white	3500	2610	2910	97	120	80	A+
	EDC57C_30W840_230A_VS4	560988	neutral white	4000	2700	3000	100	120	80	A+
	EDC57C_30W850_230A_VS4	560989	cool white	5000	2850	3150	105	120	80	A+
40	EDC57C_40W827_230A_VS4	560990	warm white	2700	3200	3600	90	120	80	A+
	EDC57C_40W830_230A_VS4	560991	warm white	3000	3400	3800	95	120	80	A+
	EDC57C_40W835_230A_VS4	560992	warm white	3500	3440	3840	96	120	80	A+
	EDC57C_40W840_230A_VS4	560993	neutral white	4000	3520	3920	98	120	80	A+
	EDC57C_40W850_230A_VS4	560994	cool white	5000	3600	4000	100	120	80	A+

* Colour tolerance: 3 MacAdam | ** Production tolerance of luminous flux and efficiency: $\pm 10\%$ | CRI ± 3

Minimum order quantity: 100 pcs.

The values contained in this data sheet can change due to technical innovations. Any such changes will be made without separate notification.

LED Modules ReadyLine COB – HiCRI

Optical Characteristics

at $t_c = 55\text{ °C}$, at 230 V AC

Typ. output W	Type	Ref. No.	Colour	Correlated colour temperature* K	Luminous flux (lm) and typ. efficiency (lm/W)**			Typ. beam angle °	Typ. CRI R _a	Energy efficiency
					min. lm	typ. lm	typ. lm/W			
10	EDC57C_10W927_230A_VS4	563463	warm white	2700	700	800	80	120	90	A+
	EDC57C_10W930_230A_VS4	563464	warm white	3000	750	850	85	120	90	A+
	EDC57C_10W935_230A_VS4	563470	warm white	3500	770	870	87	120	90	A+
	EDC57C_10W940_230A_VS4	563477	neutral white	4000	800	900	90	120	90	A+
	EDC57C_10W950_230A_VS4	563479	cool white	5000	750	850	85	120	90	A+
15	EDC57C_15W927_230A_VS4	563480	warm white	2700	1050	1200	80	120	90	A
	EDC57C_15W930_230A_VS4	563481	warm white	3000	1125	1275	85	120	90	A+
	EDC57C_15W935_230A_VS4	563482	warm white	3500	1155	1305	87	120	90	A+
	EDC57C_15W940_230A_VS4	563483	neutral white	4000	1200	1350	90	120	90	A+
	EDC57C_15W950_230A_VS4	563484	cool white	5000	1125	1275	85	120	90	A+
20	EDC57C_20W927_230A_VS4	563485	warm white	2700	1300	1500	75	120	90	A
	EDC57C_20W930_230A_VS4	563486	warm white	3000	1400	1600	80	120	90	A
	EDC57C_20W935_230A_VS4	563487	warm white	3500	1420	1620	81	120	90	A+
	EDC57C_20W940_230A_VS4	563488	neutral white	4000	1460	1660	83	120	90	A+
	EDC57C_20W950_230A_VS4	563489	cool white	5000	1500	1700	85	120	90	A+
30	EDC57C_30W927_230A_VS4	563490	warm white	2700	1950	2250	75	120	90	A
	EDC57C_30W930_230A_VS4	563491	warm white	3000	2100	2400	80	120	90	A
	EDC57C_30W935_230A_VS4	563492	warm white	3500	2130	2430	81	120	90	A+
	EDC57C_30W940_230A_VS4	563493	neutral white	4000	2190	2490	83	120	90	A+
	EDC57C_30W950_230A_VS4	563494	cool white	5000	2250	2550	85	120	90	A+
40	EDC57C_40W927_230A_VS4	563495	warm white	2700	2600	3000	75	120	90	A
	EDC57C_40W930_230A_VS4	563496	warm white	3000	2800	3200	80	120	90	A
	EDC57C_40W935_230A_VS4	563497	warm white	3500	2840	3240	81	120	90	A+
	EDC57C_40W940_230A_VS4	563498	neutral white	4000	2920	3320	83	120	90	A+
	EDC57C_40W950_230A_VS4	563499	cool white	5000	3000	3400	85	120	90	A+

* Colour tolerance: 3 MacAdam | ** Production tolerance of luminous flux and efficiency: $\pm 10\%$ | CRI ± 3

Minimum order quantity: 100 pcs.

The values contained in this data sheet can change due to technical innovations. Any such changes will be made without separate notification.

Accessories for LED Modules ReadyLine COB

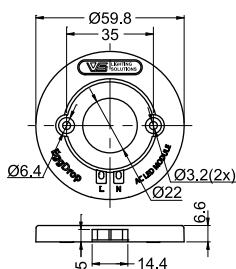


Holder

Dimensions (ØxH): 59.8x6.6 mm

Material: plastic, white

Ref. No.: 559786



Holder for EVO reflectors

For COB Type EDC57C

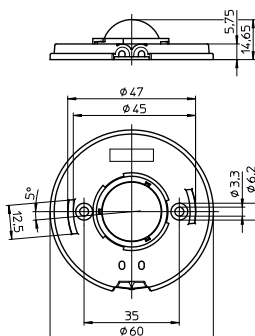
Cover for LES: PC, transparent

Dimensions (ØxH): 60 x14.65 mm

Packaging unit: 72 pcs

Ref. No.: 561847 Material: PC, black
inner ring: metallized

Ref. No.: 563095 Material: PC, white



Thermal Pad

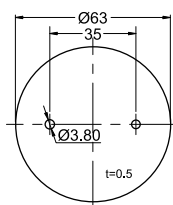
Dimensions (ØxH): 63x0.5 mm

Thermal conductivity λ :

2 W/mK (10 W, 15 W, 20 W, 30 W)

5 W/mK (40 W)

Ref. No.: 559883



The values contained in this data sheet can change due to technical innovations. Any such changes will be made without separate notification.

Accessories for LED Modules ReadyLine COB

Exchangeable aluminum reflectors

Technical notes

Reflectors made of aluminium with bayonet fixation

Surface: anodised

Weight: 27/17 g (D90/D75)

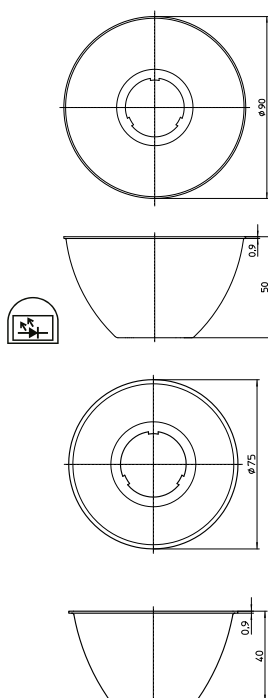
Packaging unit: 18 pcs.

Usage and maintenance

If necessary clean reflectors with mild soap, water and soft cloth.

Never use any commercial cleaning solvents on reflectors, like alcohol.

Please handle or install reflectors with wearing gloves, skin oils may damage reflector or its optical characteristic.



Ref. No.	Beam characteristic	Beam angle (°)	
		EDC_57C_10W / 15W / 20W LES Ø 14 mm	EDC_57C_30W / 40W LES Ø 21 mm

Reflector D90 – H = 50

557359	narrow	14	20
557360	medium	24	28
557361	wide	26	36
563446	extra wide	45	50

Reflector D75 – H = 40

557152	narrow	14	20
557153	medium	24	25
557154	wide	32	40
562157	extra wide	50	62

It's possible to use all the reflectors on the same holder.

Assembly and Safety Information

The LED modules are designed for direct mains operation (230 V AC). Installation must be carried out under observation country specific relevant safety regulations and standards.

- The LED module is a built-in lighting module to assemble into luminaires.
- Suitable for luminaires of protection class I, grounding is mandatory to comply with safety standards.
- When using the 30 W and 40 W version, the thermal pad (Ref. No. 559883) and the holder (Ref. No. 559786, 561847, 563095) are mandatory to comply with applicable safety regulations. Vossloh-Schwabe recommends to use the holder (Ref. No. 559786) and the thermal pad (Ref. No. 559883), in order to comply with applicable safety regulations.

- In case of applications in luminaires of protection class II the safety regulations acc. to luminaire safety standards must be observed.
- Operation of the LED module is not allowed when it is not built-in into a luminaire. Depending on application, luminaire application specific safety standards have to be observed (e.g. EN 60598 for Europe). Depending on the use of the luminaire in different countries (export), the country specific safety standards have to be regarded (e.g. EN 60598 for Europe).
 - Regard to sufficient isolation acc. country specific standards.
 - Live parts must not be touched. Luminaire must be closed acc. country specific standards. Danger of life!!!



The values contained in this data sheet can change due to technical innovations. Any such changes will be made without separate notification.

LED Modules ReadyLine COB

Assembly and Safety Information

- Clearance and creepage distances of the module are designed for class I luminaires (basic insulation). For built-in of the module the required standards have to be observed (e.g. EN 60598).
- Do not exceed values given in this specification.
- Do not exceed max t_c temperature of 85 °C.
- The module must be fixed onto a thermally conductive surface. Heat sink must cover the entire backside surface of the module.
- When installing/screwing the module into a luminaire, please ensure that cables are not squeezed between luminaire/heat-sink and LED module.
- Please ensure standard ESD (electrostatic discharge) protection measures are employed when handling and installing LED modules. Electrostatic discharge can damage LEDs.
- The LED modules are connected via two on board push-in connectors for flexible or solid conductors.
Conductor section: AWG22-AWG18
 - Flexible: 0.45–0.96 mm²
 - Solid: 0.324–0.82 mm²Strip length: 6 mm ±0.5 mm
The AWG22 flexible cable has to be tinned
The AWG20 and AWG18 wires have to be twisted.
The contacts can be released with a flat-headed screwdriver with a width of 3 mm. It has to be ensured, that the used cables do not decrease clearance and creepage distance of the modules. The cable must be put in completely (as far as isolation will go) into terminal. Used cables must fulfil luminaire safety standards (EN 60598). Other country specific standards have to be regarded.
- Parallel connection is mandatory for safe electrical operation. Serial connection of LED modules is not allowed.
- Due to the used electronic parts on the module not all available phase-cutting dimmers are compatible. Dimmable with phase-cutting leading- and trailing-edge dimmer. Minimum dimmer load has to be observed. The compatibility of the dimmer and the modules has to be confirmed prior to installation to avoid flickering.
- The modules must be fixed with M4 screws. Fixation only with flat or cylinder head screws (M4) (no countersunk screws). Max. torque for PCB: 0.6 Nm (M4), max. torque with holder: 0.3 Nm (M4).
- To ensure problem-free operation, the specified maximum temperature at the t_c point (see "Operating Life") must be observed (measured in accordance with EN 60598-1). To satisfy this point, it is necessary to put measures in place to ensure any heat is dissipated from the LED module to the environment.
- In the event of outdoor applications or applications in damp locations, care must be taken to protect LED assembly modules against humidity, splashes and jets of water. Any corrosion damage resulting from humidity or contact with condensation will not be recognised as a defect or manufacturing fault. LED assembly modules are not specially protected against foreign bodies or dust. Depending on the type of application, further protection must be ensured to prevent dust and foreign bodies from entering. Relevant country and application specific standards have to be regarded.

- Installation by qualified electrician only
- Do not add or change wires while circuit is active
- Do not make modifications on module
- Do not use adhesives to attach that outgas organic vapour
- Do not use together with material containing sulfur
- Do not operate module with AC generators
- Do not operate modules by DC
- LED modules must not be subjected to any undue mechanical stress, e. g.: LED module
 - handle modules carefully
 - avoid shear and compressive forces onto the modules during handling and installation
 - avoid vibrations of more than 2 kHz, 40 G
- If module is used in rooms with fast moving parts as the light modulation might cause stroboscopic effects.
- This LED module might interfere with displays and cameras due to modulation.
- The photobiological safety of the LED modules is classified into risk groups in accordance with EN 62471: 2008 and IEC TR 62778: risk group 1

Applied Standards

- EN 62031
LED modules for general lighting – Safety specifications
- EN 62471
Photobiological safety of lamps and lamp systems
- EN 55015
Radio disturbance emissions
- EN 61000-3-2
Limits for harmonic emissions
- EN 61547
Immunity requirements

Product Guarantee

- 5 years
- The conditions for the Product Guarantee of the Vossloh-Schwabe Group shall apply as published on our homepage (www.vossloh-schwabe.com).
We will be happy to send you these conditions upon request.

The values contained in this data sheet can change due to technical innovations. Any such changes will be made without separate notification.

Tested dimmers for LED Modules ReadyLine COB

ReadyLine COB modules are dimmable with common phase-cut dimmers.

Minimum dimmer load has to be observed.

The compatibility of the dimmer and the modules has to be approved prior to installation.

- Vossloh-Schwabe DimONE 186607
- Vossloh-Schwabe DimONE Bluetooth® 186608
- Vossloh-Schwabe Dimmer 250 W 554591
- Vossloh-Schwabe Dimmer 500 W 554592
- Jung 225TDE Insta 51040
- Gira 030700 = Insta
- Berker 2874
- Berker 286710 Insta 5190
- Busch Jäger 6513 U-102
- Busch Jäger 6519U
- Sygonix 33595A
- Merten MEG5136-0000
- LeGrand ADW-ETL4-420VA
- Hager WUD82 + WYA920
- Merten 577899 + 570419
- Gira 2262 Anschn.
- Jung 225 NVDE Anschn.
- Berker 85421200 leading edge Anf. 2013 / equiv. Hager Anf. 2013 both Touch
- Sygonix 33596V leading edge
- Sygonix 33594C leading edge
- Sygonix 33594R leading edge
- Merten MEG5170-0300 + 343519
- Eltako EUD61NPN univ.
- Eltako EUD61M-UC univ.
- Eltako EUD61NP univ.
- Hager EVN002 univ.
- Hager EVN004 univ.
- Berker 16701 univ.
- Jung UD1255REG univ.
- Busch Jäger 6583 univ.
- Eltako EUD12D univ. / Eltako EUD12F univ. / Eltako EUD12Z univ.
- Eltako EUD12Z univ.

The values contained in this data sheet can change due to technical innovations. Any such changes will be made without separate notification.