

PCB-CLIP

FOR FASTENING OF LED PCBs



PCB-CLIP

**For simple fastening of LED PCBs
without needing screws**



PCB-Clip

- **SUITABLE FOR LUMINAIRE SHEETS AND ALUMINIUM PROFILES WITH THICKNESSES BETWEEN 1.5 AND 3.6 MM**
- **FOR SLIM-LINE PCBs WITH LITTLE CLEARANCE BETWEEN THE FIXING HOLE AND THE LED**
- **SIMPLE TO MOUNT AND DISMANTLE WITHOUT NEEDING TOOLS**
- **TWIST-PROOF CLIP**
- **HEAT-RESISTANT DURING SOLDERING**

PCB-Clip

For simple fastening of LED PCBs without needing screws

For fastening LED PCBs to luminaire sheets or aluminium profiles without needing screws.

Suitable for f.e. the following LED modules WU-M-480/-481/-501/-502

Dimensions (LxWxH): 12x4.7x5.8 mm

Material: Metal clip with silicone pad

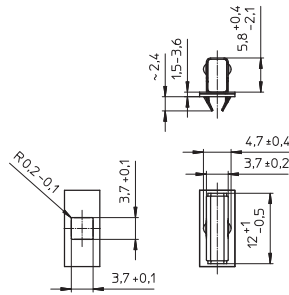
For PCB fixing holes: \varnothing 4.7 mm

For luminaire sheet cut-out: 3.7x3.7 mm

Unit: 2000 pcs.

Type: 99000

Ref. No.: 558363



Mounting

The PCB clip is simply pressed into the fixing holes in the PCB and the luminaire sheet without needing tools.

A secure fit is ensured by the U-shaped spring with catches.



Dismantling

To remove the PCB clip, squeeze the catches together and press the clip upwards.

The procedure demands no tools.

The values contained in this data sheet can change due to technical innovations. Any such changes will be made without separate notification.