

LAMPHOLDERS E14, E27, GU10 FOR LED LAMPS



LAMPHOLDERS E14, E27 AND GU10 FOR LED LAMPS

As a result of energy-efficiency regulations in the various regions of the world, the use of all-purpose incandescent lamps has been limited or even banned.

Lamps that comply with energy-efficiency regulations are increasingly being used as a replacement for all-purpose incandescent lamps and use the same lampholder systems found with E14, E27 and GU10 bases.



E14 Thermoplastic Lampholders, One-piece

For LED lamps with base E14

E14 lampholders, for cover caps

Plain casing

Casing: PBT GF, T180, nominal rating: 2/250

Push-in twin terminals: 0.5–1.5 mm²

Rear fixing holes for self-tapping screws

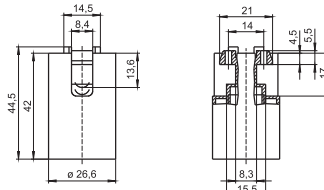
acc. to ISO 1481/7049-ST2.9-C/F

Weight: 11.3/11.4 g, unit: 1000 pcs.

Type: 64001

Ref. No.: 400901 white

Ref. No.: 400900 black



E14 lampholders, for cover caps

External thread 28x2 IEC 60399

Casing: PBT GF, T180, nominal rating: 2/250

Push-in twin terminals: 0.5–1.5 mm²

Rear fixing holes for self-tapping screws

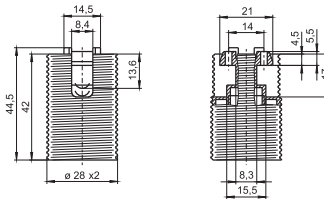
acc. to ISO 1481/7049-ST2.9-C/F

Weight: 12.5/12.2 g, unit: 1000 pcs.

Type: 64101

Ref. No.: 504080 white

Ref. No.: 505081 black



E14 lampholders, for cover caps

Profiled shape, short external thread 28x2 IEC 60399

Casing: PBT GF, T180, Nominal rating: 2/250

Push-in twin terminals: 0.5–1.5 mm²

Rear fixing holes for self-tapping screws

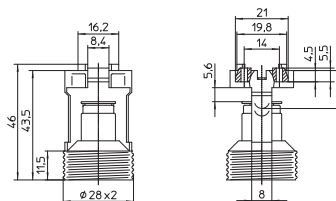
acc. to ISO 1481/7049-ST2.9-C/F

Weight: 8.5/8.4 g, unit: 1000 pcs.

Type: 64370

Ref. No.: 507700 white

Ref. No.: 507701 black



The values contained in this data sheet can change due to technical innovations. Any such changes will be made without separate notification.

E27 Thermoplastic Lampholders, One-piece

For LED lamps with base E27

E27 lampholders, for cover caps

Plain casing

Casing: PBT GF, T180

Nominal rating: 4/250

Push-in twin terminals: 0.5–2.5 mm²

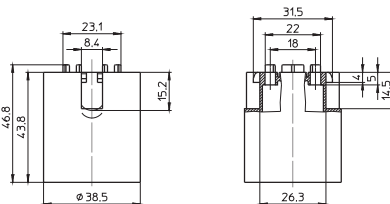
Fixing holes for screws M4

Weight: 17.4 g, unit: 500 pcs.

Type: 64401

Ref. No.: 504275 white

Ref. No.: 504276 black



E27 lampholders, for cover caps

External thread 40x2.5 IEC 60399

Casing: PBT GF, T180

Nominal rating: 4/250

Push-in twin terminals: 0.5–2.5 mm²

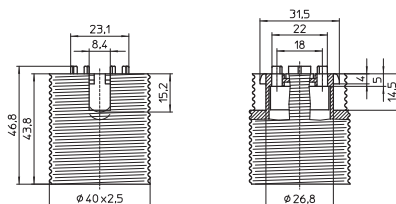
Fixing holes for screws M4

Weight: 19.1/18.8 g, unit: 500 pcs.

Type: 64501

Ref. No.: 506326 white

Ref. No.: 506328 black



E27 lampholders for cover caps type 97545/80023

Profiled shape, plain, casing: PBT GF, T180

Nominal rating: 4/250

Push-in twin terminals: 0.5–2.5 mm²

Fixing holes for screws M3

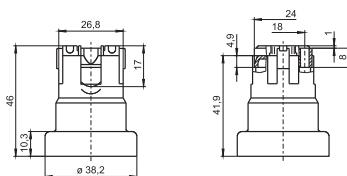
Rear fixing holes for self-tapping screws acc. to ISO 1481/7049-ST3.9-C/F

Weight: 11.5/14.9 g, unit: 500 pcs.

Type: 64770

Ref. No.: 539809 white

Ref. No.: 532359 black



The values contained in this data sheet can change due to technical innovations. Any such changes will be made without separate notification.

GU10, GZ10 Lampholders

For LED lamps with base GU10

GU10, GZ10 lampholders

For luminaires of protection class II

Casing: PBT GF, T180, nominal rating: 2/250

Push-in twin terminals for stranded conductors with ferrule on bare end of core \varnothing 1.4–1.8 mm

Fixing holes for screws M3

Weight: 8 g, unit: 1000 pcs.

Type: 31020

Ref. No.: 567340

