



VS VOSSLOH
SCHWABE

VS LIGHTING
SOLUTIONS

A Journey Through Time

1919 to 1950

1919

On 7 August, the company Eduard Vossloh KG pays 68,000 marks to the company Schiffer & Budde to purchase a facility on Gartenstraße in Lüdenscheid for the purpose of extending its production of decorative metal wares. The production site boasts a workforce of 20 employees at this point in time.

1920

The Lüdenscheid facility is extended by a new factory building and production of aluminium cutlery ceases in favour of producing decorative items. Lampholders for Edison-type incandescent lamps are also manufactured. With effect from 20 December, Eduard Vossloh KG continues to operate in the form of three individual limited liability companies: Kleiseisenwerk Vossloh and Eduard Vossloh in Werdohl as well as Metallwarenfabrik Vossloh in Lüdenscheid.

1927

Wilhelm Bornüter joins the company and becomes a management executive in 1938.

1929

Eduard Vossloh Jr. dies after a period of severe illness on 31 January.

1930

The individual companies are amalgamated to form Vossloh-Werke GmbH on 1 January. The trading companies retain their independence as subsidiaries.

The Lüdenscheid plant starts to use Bakelite, an early kind of plastic, in addition to porcelain and metal in the production of lampholders.



1937

The Lüdenscheid plant is equipped with insulator compactors and new production machinery. The factory buildings no longer provide enough room. An impressive new facility is constructed. The Lüdenscheid workforce numbers 250 employees.



Gartenstraße plant c. 1930



Production under way at the Gartenstraße plant

1946

The Lüdenscheid plant is the only one in Europe to start producing lampholders for fluorescent lamps.



1952 to 1969

1952

Vossloh is the only lampholder manufacturer to use polycarbonate, an innovation brought about by close cooperation with the Bayer company.

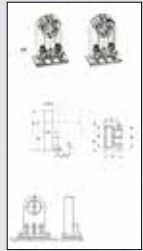
1954 / 1955

A new building complex with 3,000 square metres of usable space is constructed on Philippsstraße in Lüdenscheid.

The workforce increases to 500 employees.

1960

Vossloh-Werke GmbH acquires a plot of land in the northern Italian town of Sarsina for the purpose of constructing a new manufacturing facility for lampholders.



**Lampholder
made of PC**



Model of the Sarsina plant



Sarsina plant



Insulator compactor

1961

Vossloh builds a new manufacturing plant for lighting technology in the German town of Selm.

1962

The first overseas production site, Vossloh S.p.A. in Sarsina, is inaugurated on 24 August.

In the early 1960s, 1,300 employees work for Vossloh-Werke and a further 500 work for affiliated companies.



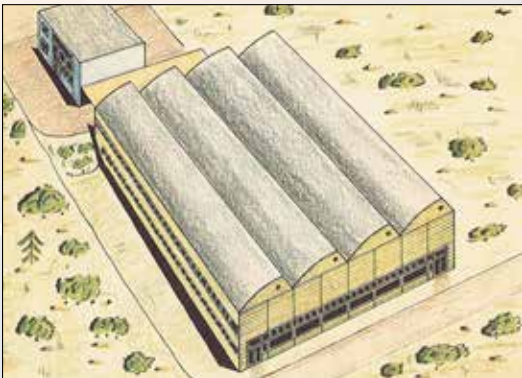
Selm plant



Hand-assembly in Selm

1964–1966

A new plastics processing plant is constructed at the Am Wendelpfad location in Lüdenscheid.



Model sketch of the new Am Wendelpfad lampholder plant in Lüdenscheid

1970 to 1979

1972

The era is characterised by a shift from hand-assembly to mechanised production. Vossloh develops its own manufacturing machinery, e.g. mechanised assembly robots and presses. Vossloh's know-how is so great that machinery is also produced for other companies up to the mid-1980s.



Fully automated production, made by Vossloh

1974

Dust and waterproof lampholders for fluorescent lamps along with the rest of the range produced at the Lüdenschied plant are presented in the 1974 catalogue. For the first time, the old VV logo and the new VOSSLOH logo are used at the same time. It would take 15 more years for the new logo to be used company-wide.



1979

The development of the rotor system for lampholders for fluorescent lamps enters a decisive stage.

Vossloh was already a leading player within the sector in 1946 and was the first manufacturer to produce lampholders for fluorescent lamps.



Rotor development in-house at Vossloh

Development has been ongoing ever since:

- 1950: introduction of the rotor system
- 1954: a lockable slit is introduced that ensures secure lamp fit
- 1958: the first thermoplastic lampholder
- 1980: development of a large rotor as a heat shield
- 1998: first lampholder for fluorescent lamps with an integrated rotor

1980 to 1989

1980

Diethelm Bonnüter-Vossloh is appointed as managing director. Having already accompanied the construction of the Sarsina plant in Italy, he then goes on to head the Lüdenscheid plant from 1980 to 1991.

1981

The Selm assembly plant for lampholders is closed due to increasing automation.

1982

A sales company for the lampholder segment is founded in Singapore.

1985

A sales company is founded in Great Britain.

1986

On 1 March, Burkard Schuchmann joins the managing board of Vossloh-Werke. Dr. Hans Vossloh retires as managing director and leaves the company. He takes over as the chairman of the supervisory board.

1987

Following lengthy negotiations, Vossloh acquires Schwabe GmbH, Urbach, along with equity held in companies situated in France and Spain. The ballasts produced by Schwabe perfectly complement the lighting technology range. The first Vossloh site for the lighting industry is founded in the United States: Vossloh Inc., Pittsburgh.



Schwabe GmbH prior to acquisition by Vossloh



Vossloh-Schwabe following its extension



Production towards the end of 1980



1989

On 1 December, the shareholders' assembly resolves to turn Vossloh-Werke GmbH into a public limited company that is structured into three divisions: railway, lighting technology as well as privacy and sun screens.



1990 to 2000

1990

Vossloh AG is registered at the local court in Altena on 2 March.

Vossloh's initial public offering at the Düsseldorf Stock Exchange on 13 June 1990 (front row): Edgar Maier-Reinhardt (1st from the left), Burkhard Schuchmann (2nd from the left), Diethelm Bomnüter-Vossloh (3rd from the left) and Dr. Hans Vossloh (4th from the left)



1993

Vossloh-Schwabe acquires a 70% share in Elektrobau Oschatz GmbH.

Vossloh-Schwabe Thailand Ltd. is founded in Bangkok, Thailand. The year also sees the market launch of ALF, the world's first luminaire wiring and testing robot.



Elektrobau Oschatz



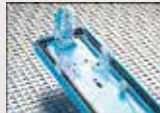
EBO products

1996

The material supply line for the injection moulding process is fully automated in Lüdenschied. The plastic material is stored in silos and then automatically transported for the purpose of drying and later feeding the production machinery.



ALF Compact



ALF components: lampholder with an IDC terminal

1998

Vossloh-Schwabe enters joint ventures with India and Tunisia.

1999

Vossloh-Schwabe acquires an 80% equity share in the Wustlich Group and taps into the LED market. Vossloh-Schwabe Elektronik GmbH is founded on 1 May. The electronics production line moves to a new Urbach facility in the autumn.



Wustlich in Kamp-Lintfort



1997 LED catalogue

2000

December sees the Lüdenschied-based Gartenstraße and Am Wendelpfad light technology plants move into a new production facility at Hohe Steinert. The new build now houses all departments previously located in Lüdenschied and Werdohl under one roof.



3D model of the Hohe Steinert location



Main entrance



Plastic material storage

Since 2001

2002

With 1,450 global employees by this time, the Vossloh-Schwabe Group is acquired by the Japanese Matsushita Electric Works, known for such brands as Panasonic.



MEW headquarters in Osaka, Japan

2005

In July, the North American Matsushita subsidiary, Aromat Corp., merges with the VS sales office in Pittsburgh under the VS brand. The electronic ballasts for high-pressure discharge lamps are a perfect complement to the VS product range for the American market.



2006

Mass production of 104-type lampholders for fluorescent lamps goes live. This lampholder was specifically developed for the parent company, MEVW, in Japan.

2008

Vossloh-Schwabe establishes new sales offices in Australia, New Zealand and South Africa.



2009

Merger of the Asian VS subsidiary with the Asian ULT subsidiary under the VS brand.



2010

Merger of the US American ULT company with the US Vossloh-Schwabe Inc. subsidiary under the ULT brand.

2011

Production commences in Serbia.



2012 / 2013

The lighting market experiences a shift towards LED as the leading source of light. The first optical components are produced at the Lüdenscheid location.

2015

Introduction of a new injection moulding process to manufacture linear optics with a length of up to 2 m at the Lüdenscheid plant.



Whenever an electric light goes on around the world, Vossloh-Schwabe is likely to have made a key contribution to ensuring that everything works at the flick of a switch.

Headquartered in Germany, Vossloh-Schwabe has been a member of the global Panasonic group since 2002 and counts as a technology leader within the lighting sector. Top-quality, high-performance products form the basis of the company's success.

Vossloh-Schwabe's extensive product portfolio covers all lighting components: LED systems with matching control gear units and state-of-the-art control systems (LiCS) as well as electronic and magnetic ballasts and lampholders.

The company's future is Smart Lighting.

A member of the Panasonic group **Panasonic**

Vossloh-Schwabe Pte. Ltd.

33 Ubi Avenue 3, Lobby A #06-72 · Singapore 408868
Phone +65/62 75 75 33 · Fax +65/62 75 76 33

www.vossloh-schwabe.com

**VS LIGHTING
SOLUTIONS**

All rights reserved © Vossloh-Schwabe
Photos: Vossloh, shutterstock.com
VS_Journey Through Time/2018