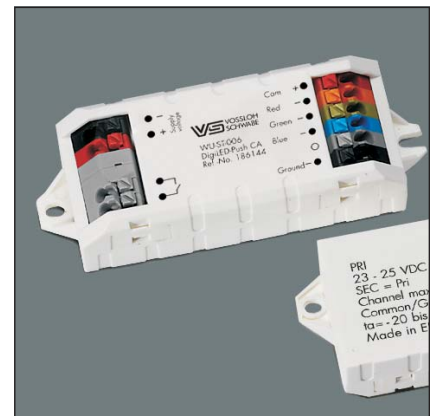




A New Lighting Experience



- custom colour control
- possibility to call up pre-set colour programs
- independent brightness control
- operation of Low- and High Power LED modules possible
- dimming of single-colour LED modules possible

DigiLED CA

Colour Control Modules

- DigiLED manual CA
- DigiLED DALI CA
- DigiLED DMX CA
- DigiLED IR CA
- DigiLED RF CA
- DigiLED Push CA
- DigiLED Mono CA
- DigiLED Slave CA Active/Passive

Vossloh-Schwabe Deutschland GmbH

Hohe Steinert 8 · 58509 Lüdenscheid, Germany · Phone: +49 (0) 23 51/101-0
Fax: +49 (0) 23 51/101-217 + -384 · www.vossloh-schwabe.com

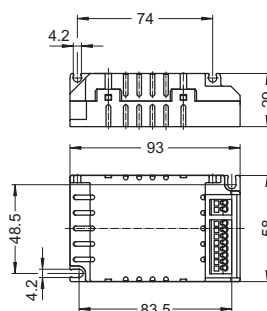
DigiLED CA

The DigiLED CA series is based on a system design that combines simplicity, flexibility and reliability. The DigiLED CA series is suitable for operating both High-Power RGB CA modules and Low-Power RGB CA modules.

In the simplest case, a keypad enables manual colour control. In addition to custom colour control, it is also possible to call up pre-set colour programs for example colour sequences.

Technical details

- Dimensions: 93x58x29 mm
- Ambient temperature t_a : -20 to 45 °C
- Operating voltage: 24 V DC
- Max. current on the supply line: 5 A
- Connectors: push-in terminals: 0.25–1.5 mm², grid: 3.5 mm
- All DigiLED not suitable for the US market



DigiLED Manual CA

- Colour controls via key pads (6 keys)
- Individual colour control or selection of pre-set programs
- $t_c = 55$ °C max.
- Max. current per control channel: 1.25 A
- Type: WU-ST-001-Digi-manuell-CA

Ref. No.: 186136

DigiLED DALI CA

- Digital colour controls via DALI light management
- $t_c = 60$ °C max.
- Max. current per control channel: 1.25 A
- Type: WU-ST-004-Digi-DALI-CA

Ref. No.: 186138

DigiLED DMX CA

- Digital colour controls via DMX light management
- $t_c = 60$ °C max.
- Max. current per control channel: 1.25 A
- Type: WU-ST-003-DigiLED-DMX-CA

Ref. No.: 186153

DigiLED IR CA

- Colour adjustment by a portable remote control
- Call up of pre-adjusted setting possible
- Data transfer via infra-red
- $t_c = 55$ °C max.
- Max. current per control channel: 1.25 A
- Type: WU-ST-005-Digi-IR-CA

Ref. No.: 186154

The CA series of VS colour control modules are available with both a manual operating pad and a DALI interface or "Push" variant.

Furthermore the DigiLED Mono is available. The DigiLED Mono enables the dimming of single-colour (e. g. white) LED-modules. Detailed product description can be found in the respective datasheets at www.vs-optoelectronic.com.



DigiLED Manual CA



DigiLED DALI CA



DigiLED DMX CA



DigiLED IR CA

The values contained in this data sheet can change due to technical innovations. Any such changes will be made without separate notification. Please find further detailed information at www.vs-optoelectronic.com.

DigiLED RF CA

Easy operation possible via radio frequency (RF) and an keypad with 7 buttons. The operation via radio frequency (RF) enables a flexible installation. Optical "line of sight" or cables are not necessary due to RF operation.

$t_c = 60\text{ °C max.}$

Max. current per control channel: 1.25 A

Type: WU-ST-012-DigiLED-RF CA

Ref. No.: 186181



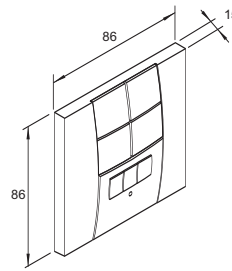
DigiLED RF CA

Walltransmitter

Required to activate the programs in the DigiLED RF

Dimensions: 86x86x15 mm

Ref. No.: 536843



Walltransmitter

DigiLED Push CA

Colour adjustment by separate push button

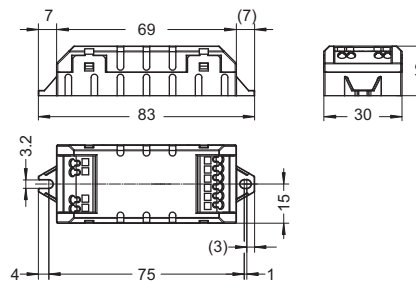
Permits retrieval of pre-set programs

$t_c = 55\text{ °C max.}$

Max. current per control channel: 1.25 A

Type: WU-ST-006-DigiLED-Push CA

Ref. No.: 186144



DigiLED Push CA

DigiLED Mono CA

For dimming of single-colour LED modules

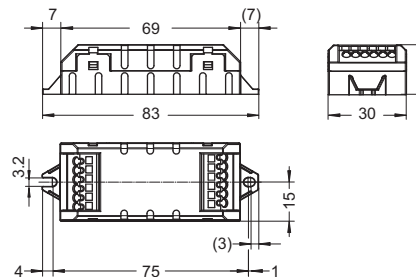
Dimming via 1-10 V interface or external PWM signal

$t_c = 55\text{ °C max.}$

Max. current per control channel: 5 A

Type: WU-ST-010-DigiLED-Mono CA

Ref. No.: 186155



DigiLED Mono CA

DigiLED Slave CA

Increase of the system performance for 24 V CA LED built-in system

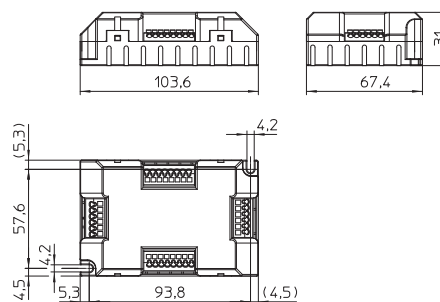
Signal amplification on channels RGB(W)

$t_c = 65\text{ °C max.}$

Max. current per control channel per slave: 1.25 A

Type: WU-ST-002-DigiLED-Slave CA

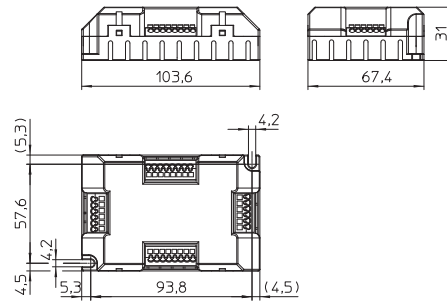
Ref. No.: 186142



DigiLED Slave CA

Passive Slave CA

Increase of the system performance
for 24 V CA LED built-in system
No signal amplification on channels RGB(W)
 $t_c = 65\text{ °C max.}$
Type: WU-ST-011-Passive-Slave CA
Ref. No.: 186172



Slave PCB CA

PCB for increase of the system performance
for 24 V CA LED built-in system
Without casing
No signal amplification on channels RGB(W)
 $t_c = 65\text{ °C max.}$
Type: WU-VB-004-Slave-PCB CA
Ref. No.: 186140

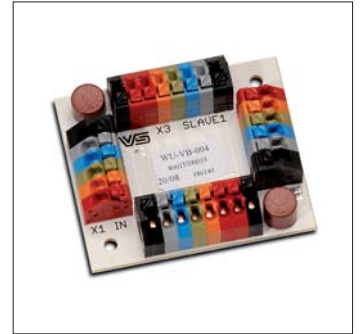
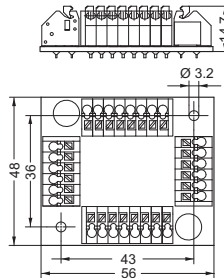


Table 1: Terminal connection

Pole	Colour coding	Function	Max. current-carrying capacity	Colour coding System flatband cable
1	• Red	Supply line for LED built-in modules (+24 V)	5.00 A	• Blue
2	• Orange	PMW signal line for channel 1	1.25 A	• Grey
3	• Green	PMW signal line for channel 2	1.25 A	• Grey
4	• Blue	PMW signal line for channel 3	1.25 A	• Grey
5	• Light grey	PMW signal line for channel 4	1.25 A	• Grey
6	• Black	Supply line for LED built-in modules (GND)	5.00 A	• Grey