



**NEW PRODUCT NEWS**

NOVEMBER '18 | WEBVERSION

**LEDSpots Tiny**

- Extremely small round one-single-LED spotlight
- Perfect for a brilliant effect on your shelves
- For cut-out: Ø 26 mm
- Beam angle: 36°
- Long service life: 50,000 hrs.



[Read more](#)

**COB PCB holder Easy**

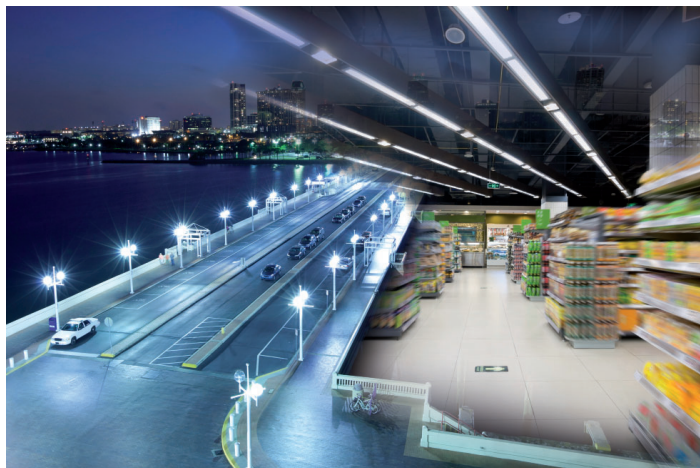
- For easy and secure fixation of LUGA Shop modules and a range of COBs from various manufacturers
- Enlarged connection area for easier fixation of connecting leads
- Our wide range of optics and reflectors can easily be attached using the bayonet clip on the holder. A simple modular design.



[Read more](#)

**LED modules for street and industry illumination – now even more efficient**

- Versatile LED modules for indoor and outdoor use, which allow a highly flexible system design with optimal application-related light distribution
- Very high efficiency: up to 172 lm/W at  $t_p = 60\text{ °C}$
- Very long service life: > 108,000 hrs. (L80/B10)
- Available as variants with or without IP protection (IP20/IP67)



**Street**

- [Allround Gen. 3](#)
- [M-Class IP67](#)
- [S/Area IP67](#)
- [M/S/Area IP20](#)

**Industry**

- [Allround Gen. 3](#)
- [SYM I IP67](#)
- [SYM II IP67](#)
- [SYM I & SYM II IP20](#)



**Matching LED drivers**

[Please click here](#)



Do you have any questions? Your VS representative will be delighted to hear from you.

Your VS Sales Team